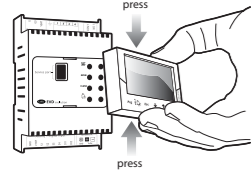




LEGGI E CONSERVA QUESTE ISTRUZIONI
READ AND SAVE THESE INSTRUCTIONS
READ CAREFULLY IN THE TEXT

Display board mounting



Refrigerant compatibility

R22; R134a; R404A; R407C; R410A; R507A; R290; R600; R600a; R717; R744; R728; R1270; R417A; R422D; R413A; R422A; R423A; R407A; R427A; R245Fa; R407F; R32; HTR01; HTR02

Table of product codes

| code | EVD evolution description | code | display (accessory) description |
|------------|--|------------|---------------------------------|
| EVD0000E00 | EVD Evolution universal (tLAN) | EVDIS00CNO | Display (Chinese) |
| EVD0000E01 | EVD Evolution universal (tLAN), 10 p2* (pcs) | EVDIS00CZO | Display (Czech) |
| EVD0000E10 | EVD Evolution universal (pLAN) | EVDIS00DE0 | Display (German) |
| EVD0000E11 | EVD Evolution universal (pLAN), 10 p2* (pcs) | EVDIS00ENO | Display (English) |
| EVD0000E20 | EVD Evolution universal (RS485/Modbus*) | EVDIS00FRO | Display (French) |
| EVD0000E21 | EVD Evolution universal (RS485/Modbus*), 10 p2* (pcs) | EVDIS00ITO | Display (Italian) |
| EVD0000E30 | EVD Evolution for CAREL valves (tLAN) | EVDIS00JPO | Display (Japanese) |
| EVD0000E31 | EVD Evolution for CAREL valves (tLAN), 10 p2* (pcs) | EVDIS00PLO | Display (Polish) |
| EVD0000E40 | EVD Evolution for CAREL valves (pLAN) | EVDIS00PTO | Display (Portuguese) |
| EVD0000E41 | EVD Evolution for CAREL valves (pLAN), 10 p2* (pcs) | EVDIS00RUO | Display (Russian) |
| EVD0000E50 | EVD Evolution for CAREL valves (RS485/Modbus*) | EVDIS00SE0 | Display (Swedish) |
| EVD0000E51 | EVD Evolution for CAREL valves (RS485/Modbus*), 10 p2* (pcs) | | |
| EVD0002E10 | EVD Evolution universal optoisolated (pLAN) | | |
| EVD0002E20 | EVD Evolution universal optoisolated (RS485/Modbus*) | | |

(*) The multiple packages are not supplied with connectors

Table of valve compatibility

| Model | Valve |
|---------|--|
| CAREL | E*V**** |
| ALCO | EX4; EX5; EX6; EX7; EX8 330 Hz (supported by CAREL); EX8 500 Hz (from ALCO specifications) |
| SPORLAN | SEI 0.5-1.1; SER 1.5-2.0; SEI 3.0; SEI 5.0; SEH 10.0; SEH17.5 |
| Danfoss | ETS 1.2-5-25B; ETS 50B; ETS 100B; ETS 250; ETS 400; CCM 10-20-30; CCM 40 |
| CAREL | Two CAREL EVX connected together |
| SPORLAN | SER(O) G, J, K |

(ENG) For further information, see the "EEV system guide" (code +030220810) and the user manual (code +0300005EN) available at www.carel.com, under the "Literature" section.

Table of EVD LEDs

| LED | on | off | flashing |
|-------|-----------------|--------------------|---------------------|
| net | connection made | no connection | communication error |
| open | valve opening | - | first configuration |
| close | valve closing | - | first configuration |
| alarm | alarm active | - | - |
| power | driver powered | driver not powered | wrong power supply |

Note: if open and close LEDs blink at the same time, the commissioning procedure has to be executed.

Display keypad

key function
Prg goes directly to the screen for entering the password to access programming mode
Esc exits programming mode (service, manufacturer) and display; after setting a parameter, exits without saving the change.
↑ in alarm mode displays the alarm queue;
↓ in the "manufacturer" level, when scrolling the parameters, shows the help screens.

IMPORTANT WARNINGS

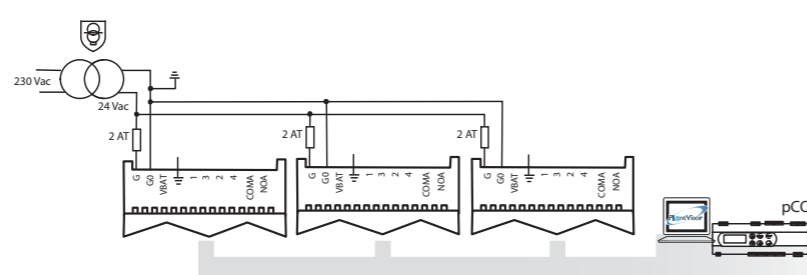
The CAREL product is a state-of-the-art device, whose operation is specified in the technical documentation supplied with the product or can be downloaded, even prior to purchase, from the website www.carel.com. The customer (manufacturer, developer or installer of the final equipment) accepts all liability and risk relating to the configuration of the product in order to reach the expected results in relation to the specific installation and/or equipment. The failure to complete such phase, which is required/indicated in the user manual, may cause the final product to malfunction; CAREL accepts no liability in such cases. The customer must use the product only in the manner described in the documentation relating to the product. The liability of CAREL in relation to its products is specified in the CAREL general contract conditions, available on the website www.carel.com and/or by specific agreements with customers.

Separate as much as possible the probe and digital input signal cables from the cables carrying inductive loads and power cables to avoid possible electromagnetic disturbance. Never run power cables (including the electrical panel wiring) and signal cables in the same conduits.

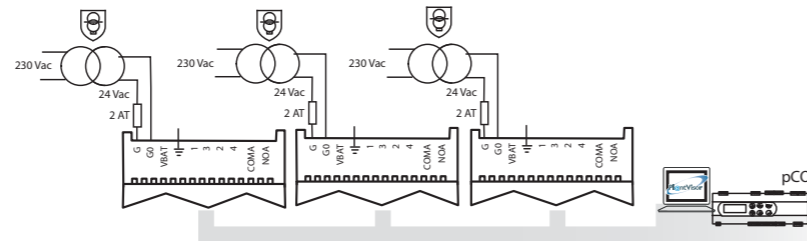
Disposal of the product
The appliance (or the product) must be disposed of separately in accordance with the local waste disposal legislation in force

tLAN, pLAN and RS485 connections and power supply

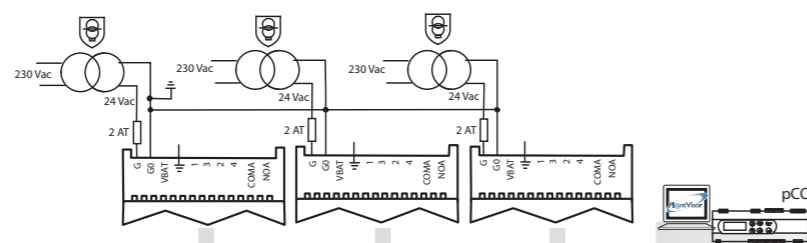
Case 1: a series of drivers is connected in a network, installed in the same electrical panel, powered by the same transformer



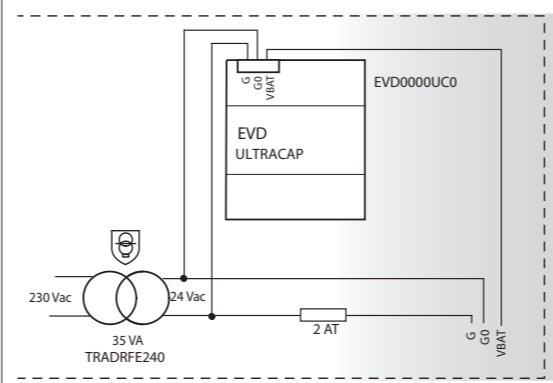
Case 2: a series of drivers is connected in a network, installed in electrical different panels, powered by different transformers (G0 not connected to earth).



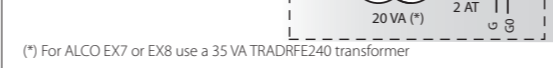
Case 3: a series of drivers is connected in a network, installed in electrical different panels, powered by different transformers with just one earth point.



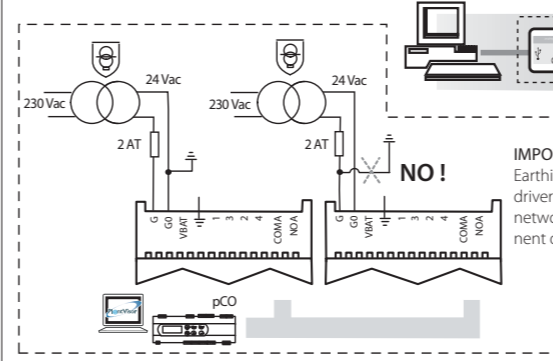
CASE 1: 230 Vac power supply with emergency module



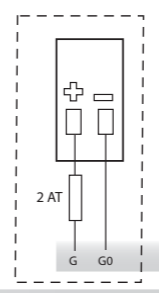
CASE 2: 230 Vac power supply without emergency module



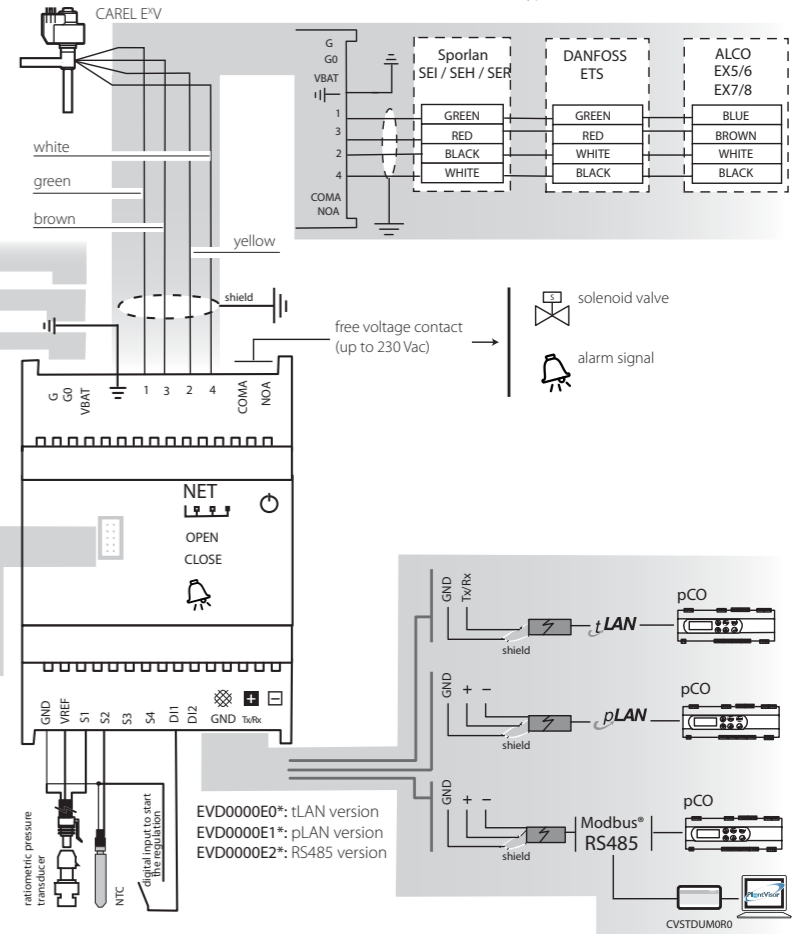
(*) For ALCO EX7 or EX8 use a 35 VA TRADDFE240 transformer



CASE 3: 24 Vdc power supply

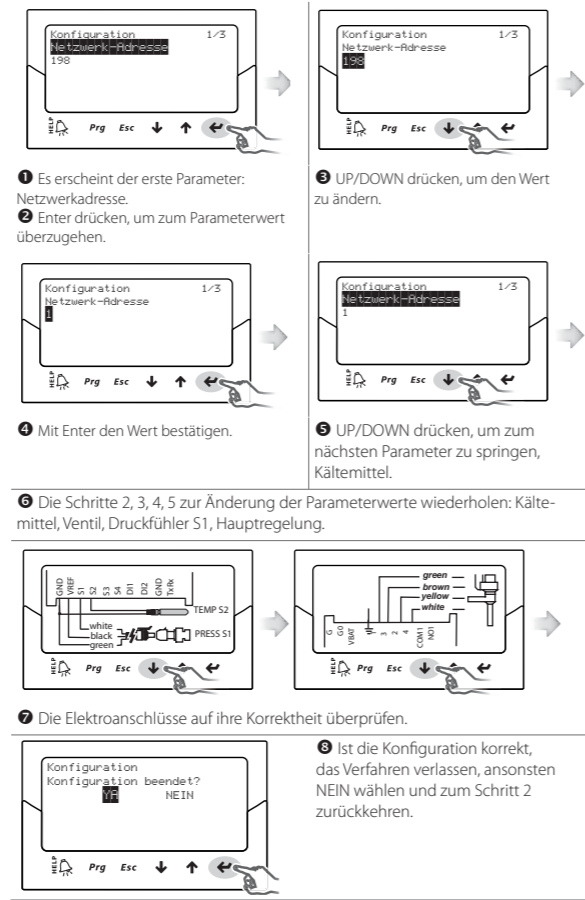


Wiring diagram for superheat control

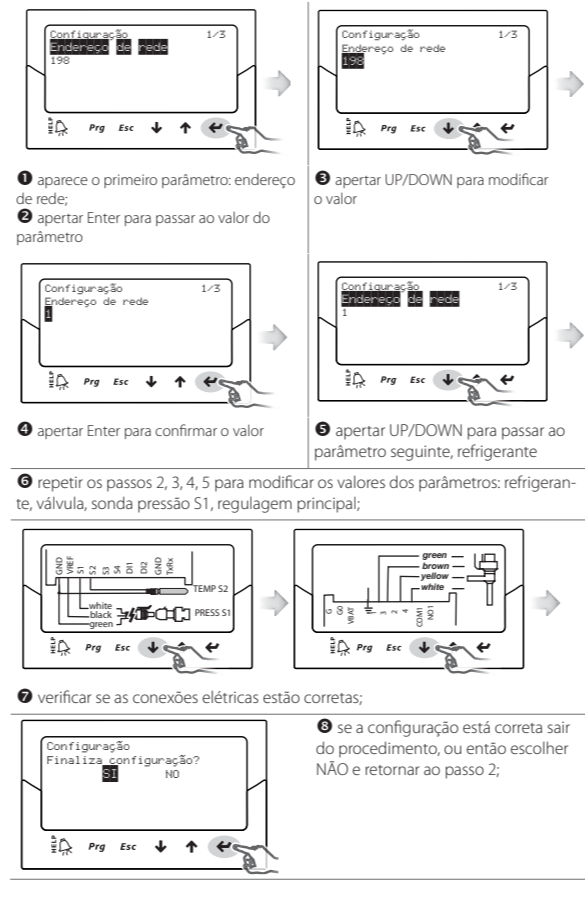


NOTE 1: use a class 2 safety transformer, suitably protected against short-circuits and voltage surges

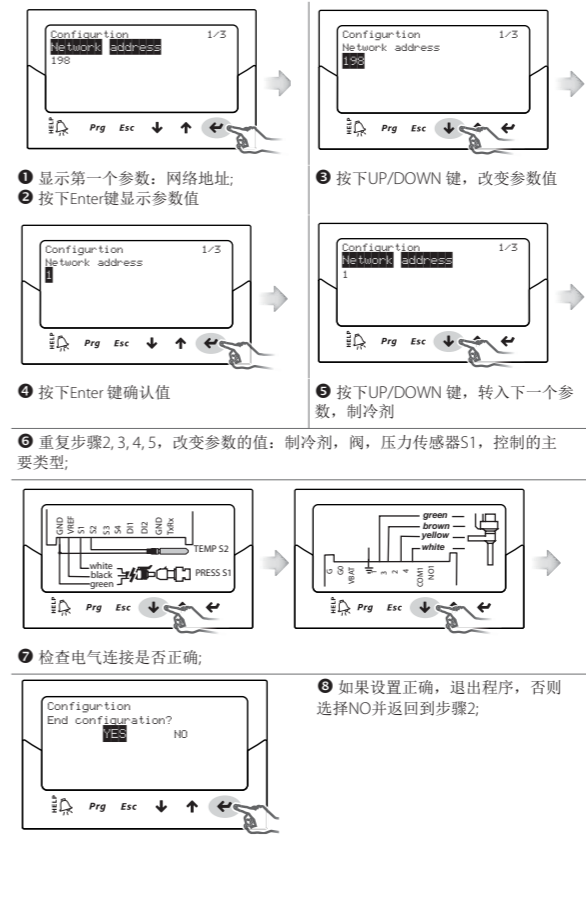
(GER) Einstellung der Basisparameter



(POR) Configuração dos parâmetros base



(CHI) 设定基本参数



(RUS) Установка основных параметров

